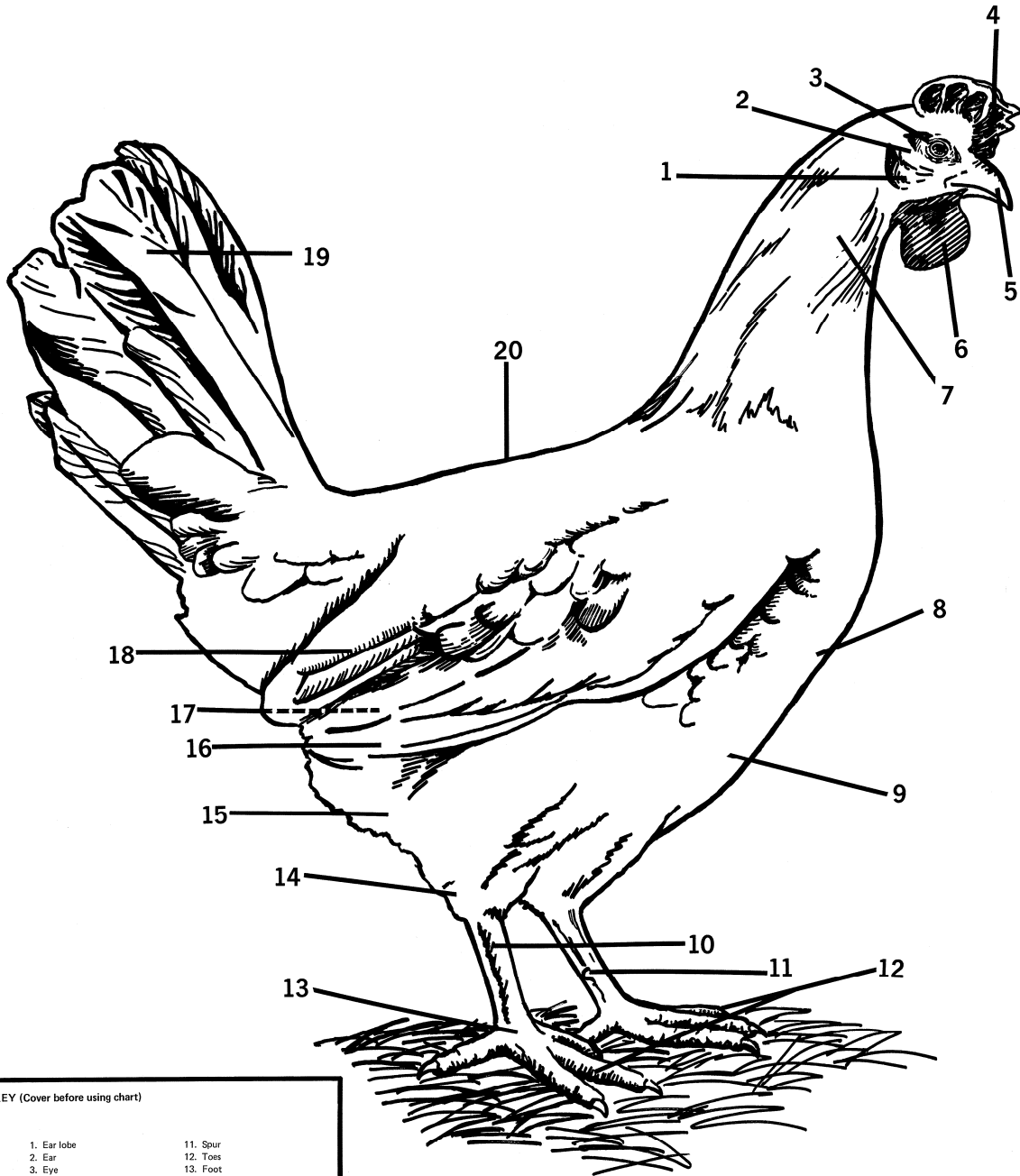


MINNESOTA 4-H CHICKEN CHART



KEY (Cover before using chart)

1. Ear lobe	11. Spur
2. Ear	12. Toes
3. Eye	13. Foot
4. Comb	14. Hock joint
5. Beak	15. Abdomen
6. Wattles	16. Primary wing feathers
7. Hackle feathers	17. Pubic bones
8. Breast	18. Secondary wing feathers
9. Keel bone	19. Main tail feathers
10. Shank	20. Back

Copyright © 2007, Regents of the University of Minnesota. All rights reserved.
For Americans with Disabilities Act accommodations, please call (800) 876-8636.

University of Minnesota Extension is committed to the policy that all persons shall have equal access to its programs, facilities, and employment without regard to race, color, creed, religion, national origin, sex, age, marital status, disability, public assistance status, veteran status, or sexual orientation.